



Energy Efficiency
is a core value for us
and a duty we owe
to future generations

LIFTING SOLUTIONS
FOR THE ENERGY EFFICIENCY
OF YOUR CLASS A HOUSE

HIGHLY EFFICIENT TRACTION

For us is a Value and a Duty we owe to future generations 



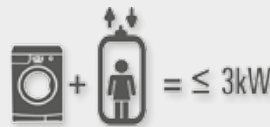
TRACTION
POWER UNIT




CLASS A

only **0,55 kW** and it connects to a standard house electrical outlet of **230 V**

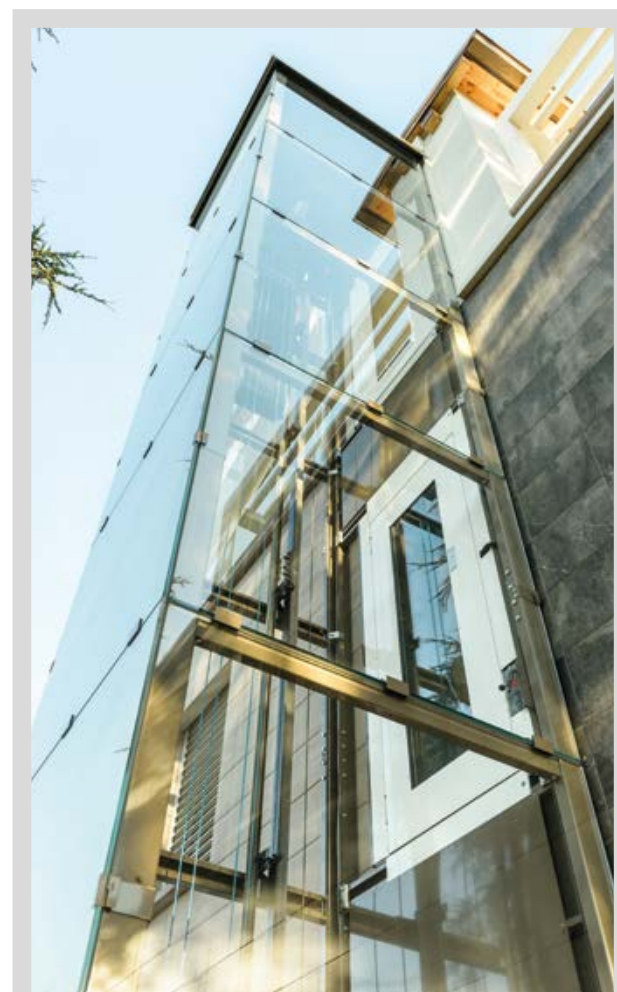
Suite Lifts belong to **Class A** according to the measurement of the VDI 4707-1* guidelines



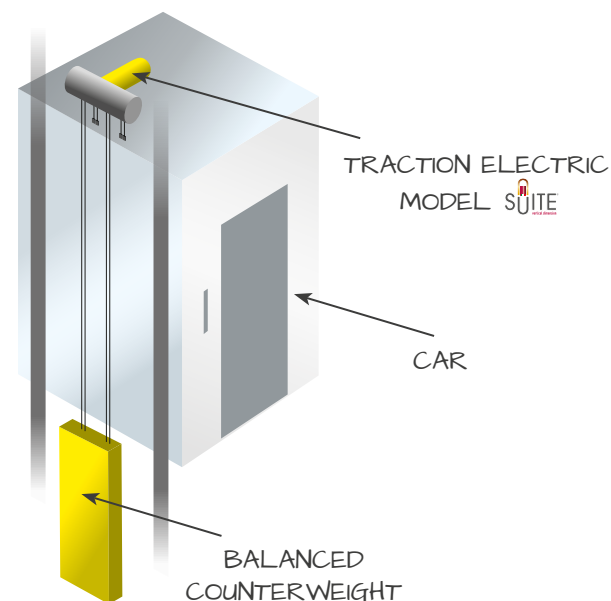
Do not be scared to use the lift while the washing machine is working

ABSORBED
POWER
0,55kW
TO **230V**

I **SPEND LESS** ON THE ELECTRICITY BILL, I MAKE MY **FAMILY HAPPY** AND I CONTRIBUTE TO THE **REDUCTION** OF AIR **POLLUTION.**

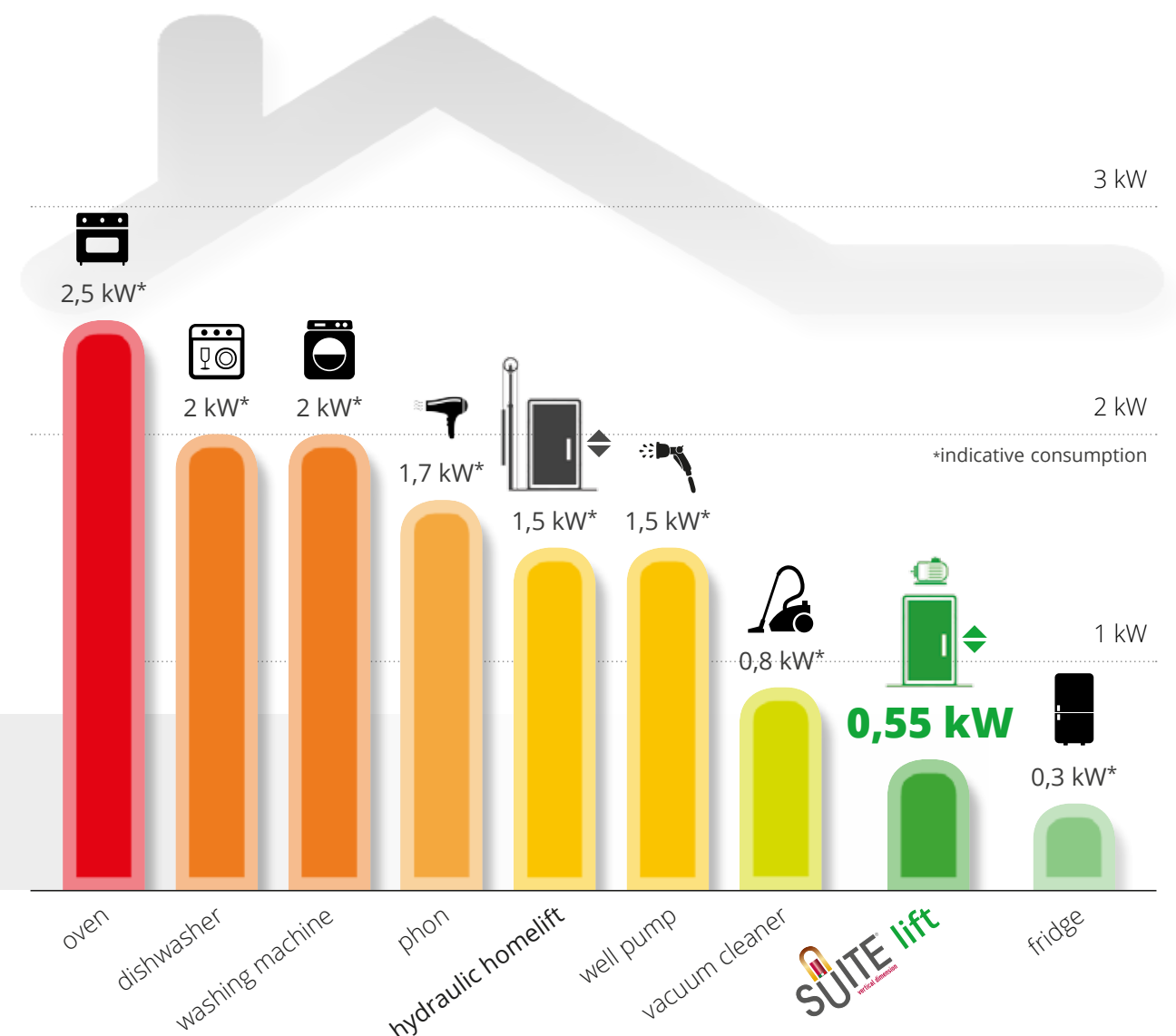


SUITE LIFT INSTALLED CLOSE TO A CLASS A HOUSE



ENERGYCONSUMPTION IS NOT A PROBLEM ANYMORE

To obtain these results in terms of **energy efficiency** we have optimized everything, also the **car weight is balanced** to reduce energy consumption.



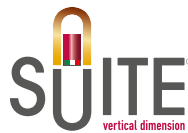
* Until the approval of the ISO standard of the sector, the VDI guidelines issued by the Association of German Engineers represents the authoritative and diffuse source in Europe for the measurement and classification of lift's energy consumption. Under no circumstances the VDI guidelines can replace the international ISO standard which will be adopted in the future for the sector.

ENERGY EFFICIENCY

VALUE WHICH ADDS VALUE

INSULATED EXTERNAL STRUCTURE

For us is a Value and a Duty we owe to future generations



The metal structure of a lift installed outside can be **insulated with insulating material** or with **heatsaving glazing** with **thermal transmittance** up to **1.1 W/mqK***

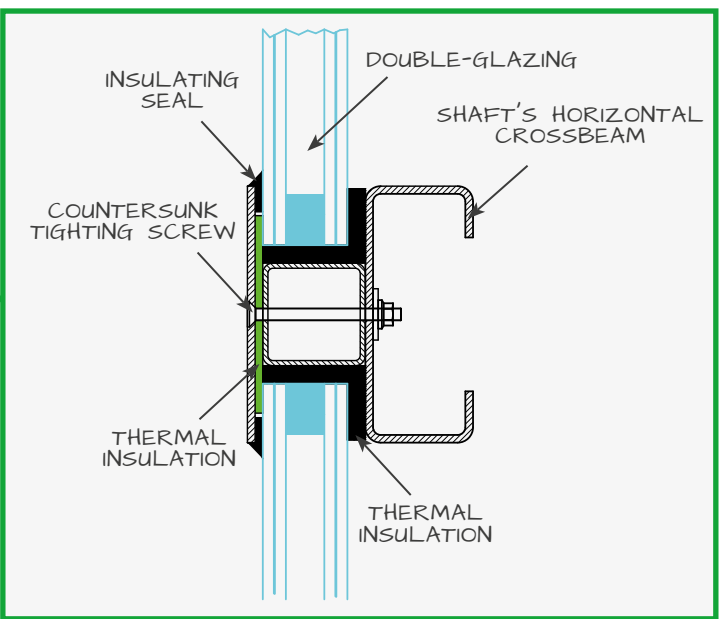
On request: sun-shading fins

THERMAL TRANSMITTANCE GLASSES
Ud = 1.1 W/mqK

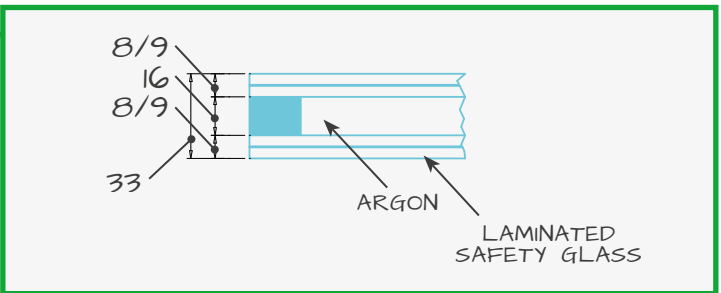
SUN AND COLD
COULD BE A PROBLEM...
... FOR OTHER



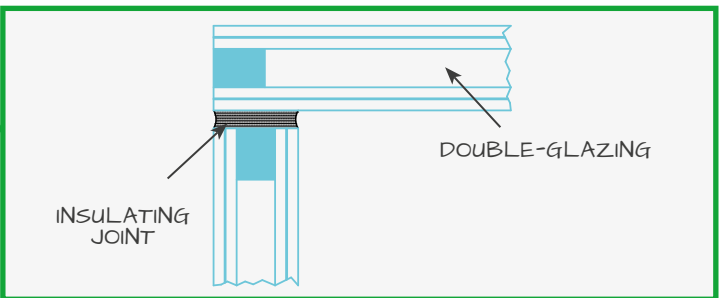
PARTICULAR GLASS FIXING ON THE METAL STRUCTURE



DOUBLE-GLAZING SECTION **W/MQK=1,1**



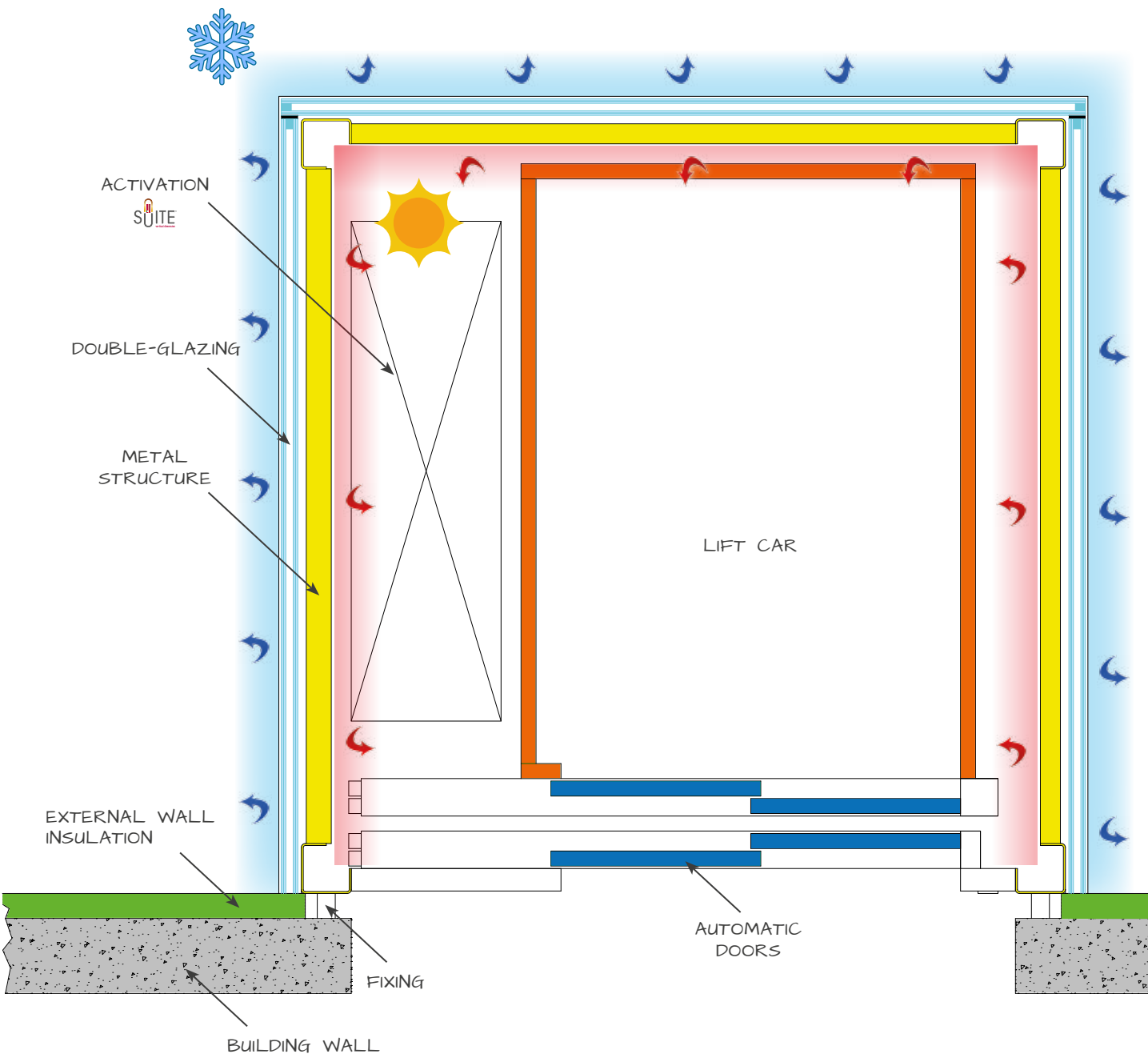
HORIZONTAL SECTION OF CORNER GLASSES



* MEASURES ARE EXPRESSED IN CM



SUITE LIFT INSTALLED CLOSE TO A CLASS A HOUSE



ENERGY EFFICIENCY

VALUE WHICH ADDS VALUE

THERMAL BREAK DOORS

For us is a Value and a Duty we owe to future generations

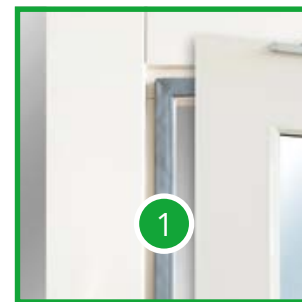
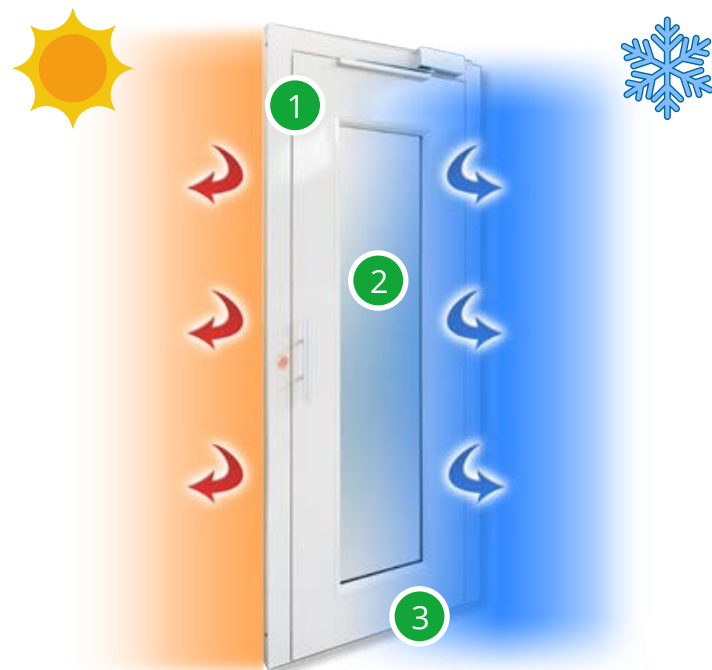


From the test performed on the "Weather-Resistant" Maryling TH door, it has been possible to establish the **thermal transmittance** index to **2.4 W/mqK***. This value is **4 times more efficient** in comparison to a standard landing swing door for lifts on the market nowadays

Calculation carried out in accordance with the norm UNI EN ISO 10077-1,2 by ZEPHIR www.zephir.ph

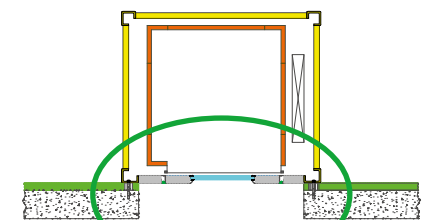
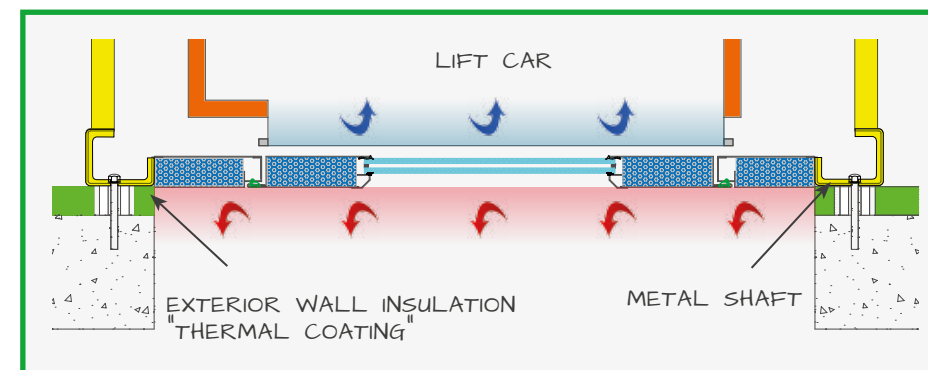
DOOR THERMAL TRANSMITTANCE
Ud = 2.4 W/mqK*

NO MORE DRAFTS

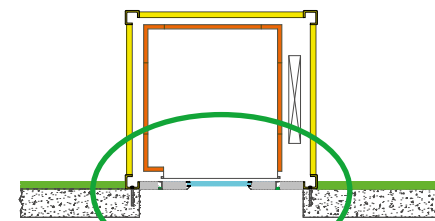
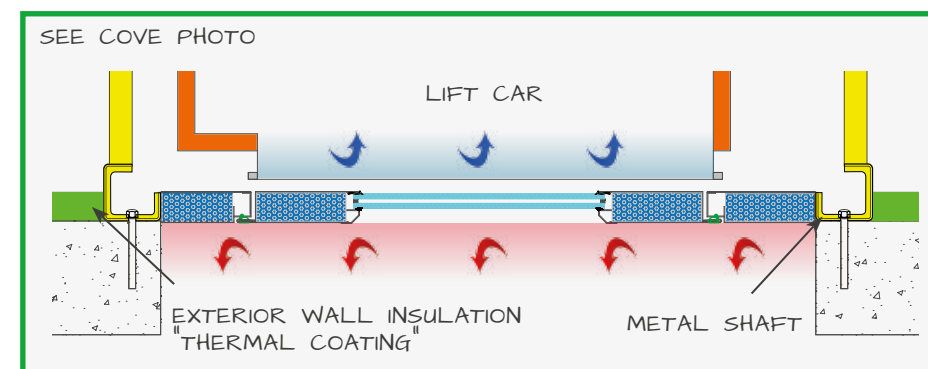


- 1 sealing with mechanical grafting on the 3 sides perimeter
- 2 double-glazing and sealing
- 3 automatic mobile seal at the bottom of the 4° side

SUGGESTED INSTALLATIONS

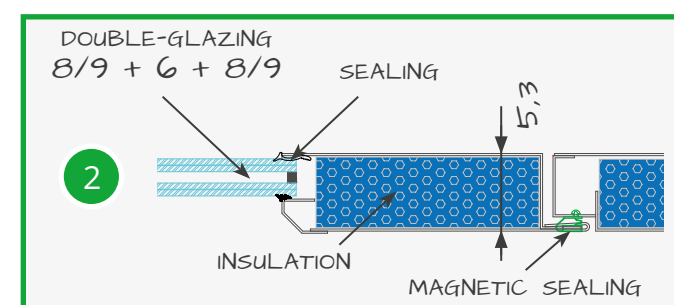


ASSEMBLY IN METAL SHAFT

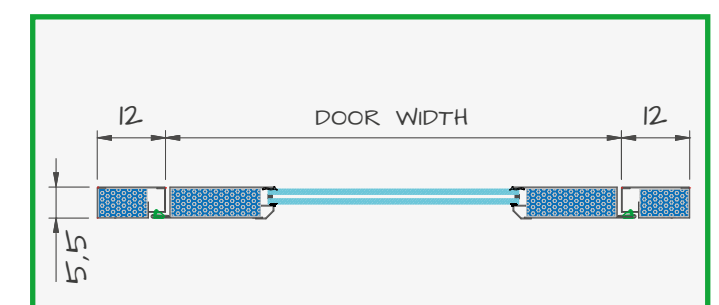


ASSEMBLY IN METAL SHAFT

DETAIL
WEATHER-RESISTANT DOOR



DIMENSIONS
WEATHER-RESISTANT DOOR



* MEASURES EXPRESSED IN CM



ENERGY EFFICIENCY

VALUE WHICH ADDS VALUE



BELIEVES IN ENERGY EFFICIENCY

THINKS, DESIGNS AND PRODUCES TO MINIMISE CONSUMPTION AND THE ENVIRONMENTAL IMPACT

PRODUCTION

SUITE is produced at Nova's facilities with highly efficient **innovative machinery** as the **Taglio-laser-cutting machine with fiber optic**. Its purchase cost is 30% higher as compared to that of similar traditional machinery in CO₂, but it requires a **50% lower installed capacity in kW**.

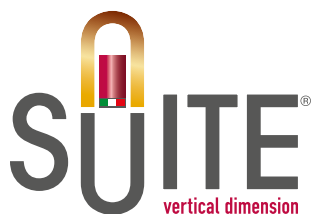


FROM CLEAN ENERGY

SUITE is manufactured at Nova's facilities with the clean energy generated by a **photovoltaic system** of **100 kW**. This ensures an own production of above 70% of the company's energy requirement. For the remaining 30%, Nova makes use of energy generated by Repower AG, which provides energy from renewable sources.



OF LIFTS



FOR YOUR CLASS A HOUSE



SUITE is a registered trademark distributed by **Nova s.r.l.**

Via G. Galilei, 116/c
40014 Crevalcore (fraz. Palata Pepoli) - Bologna - Italy
Tel. 051/98.53.30 r.a. - Fax 051/98.52.20 - info@suitelift.it

www.suitelift.it

